

Community Engagement



FOCUS GROUP LISTENING SESSIONS 30 PARTICIPANTS

- Wilmette Water Plant -
1 Participant
- MWRD -
1 Participant
- U.S. Coast Guard -
1 Participant
- Wilmette Harbor Association -
TBD
- Dog Beach Members -
6 Participants
- Sailing Beach Members -
5 Participants
- Swimming Beach Members -
2 Participants
- Garden Volunteers -
8 Participants
- Michigan Shores Club -
1 Participant
- Michigan Avenue Neighbors -
5 Participants

January 27th -28th, 2021

VIRTUAL COMMUNITY OPEN HOUSE 153 PARTICIPANTS

- Project Overview
- Existing Conditions & Analysis
- Poll Questions
- Community Engagement Process Overview
- Question & Answer Session

February 18th, 2021

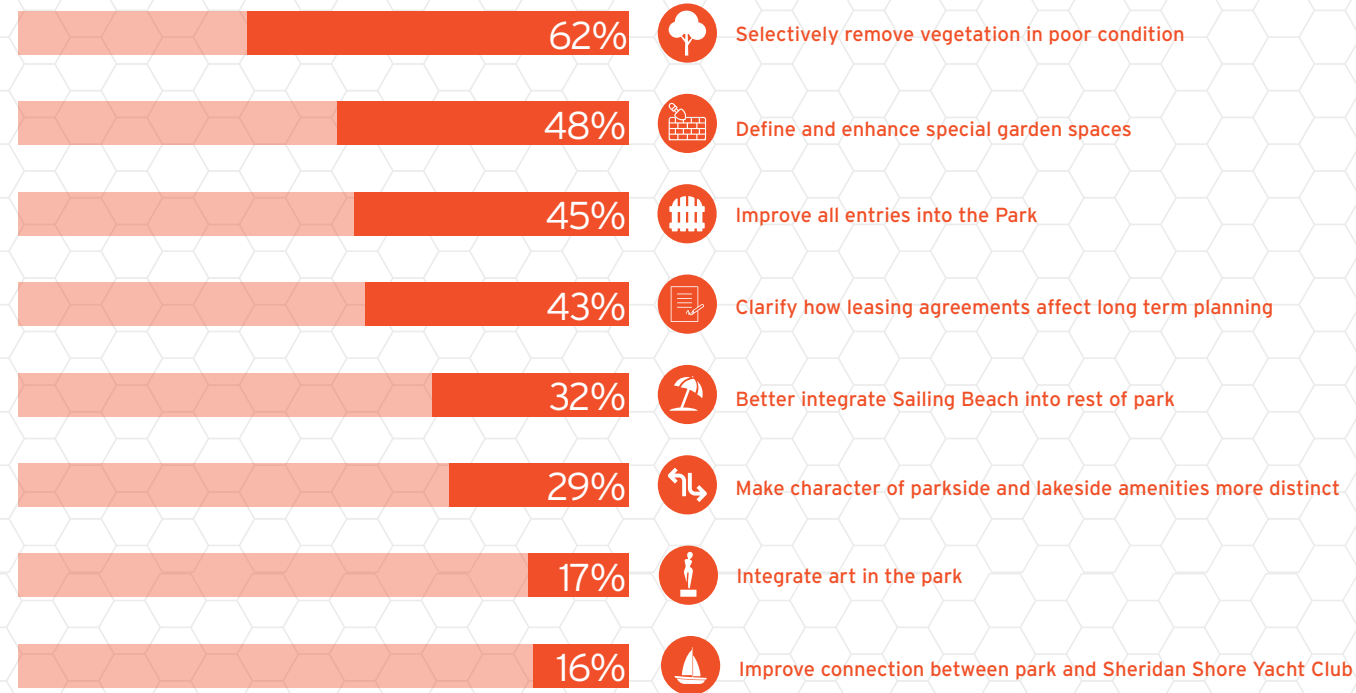
UPCOMING ENGAGEMENT

- Field House Exhibits
 - *Community Rec. Center*
 - *Centennial Rec. Complex*
 - *Village Hall*
 - *Lakeview Center*
- Expanded Online Survey
- Harbor Association Focus Group

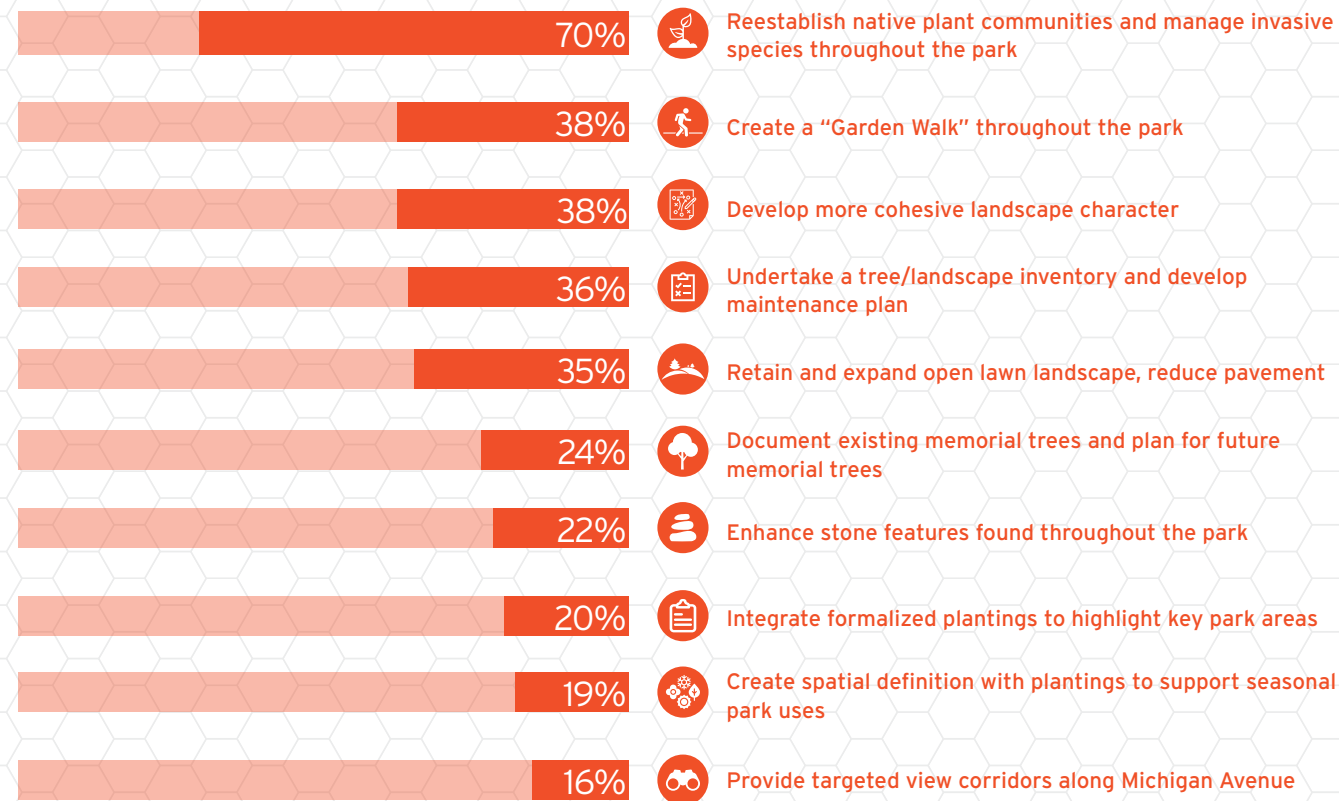
Webinar Poll Results

February 18th, 2021

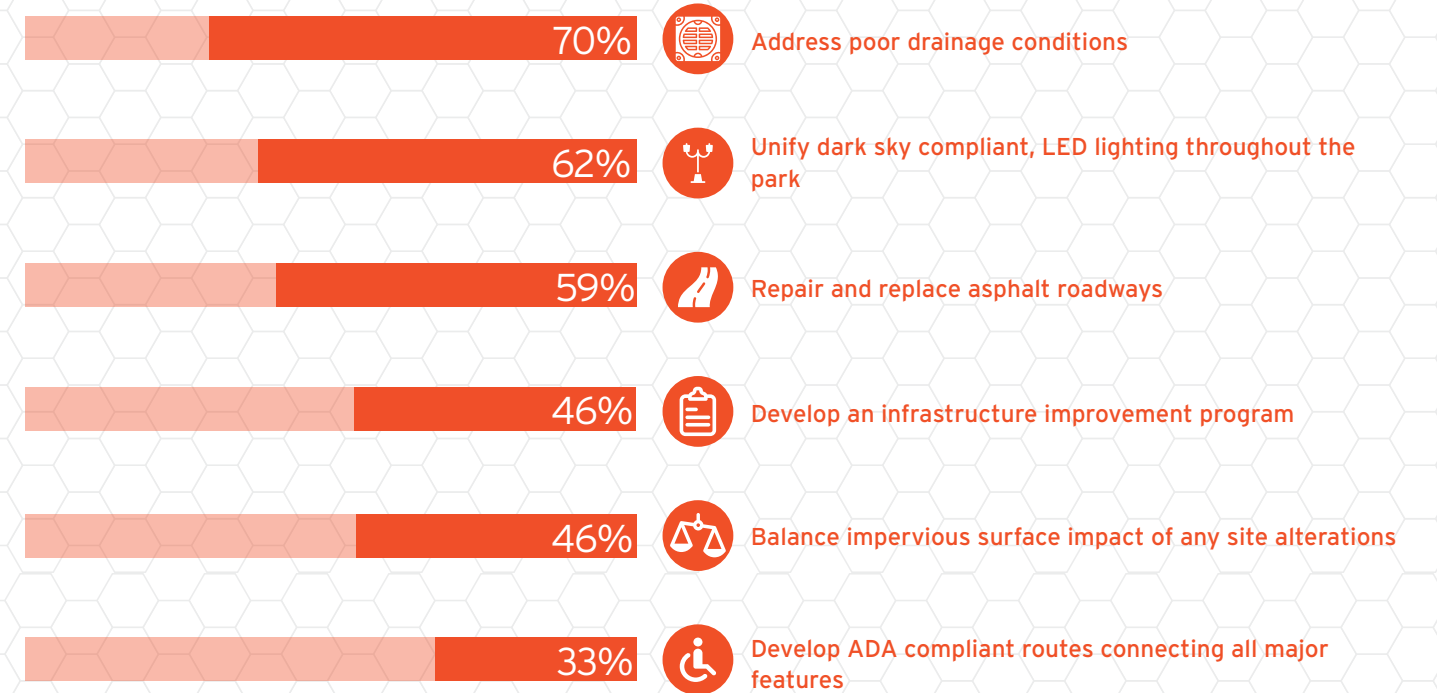
Park Context: Which of the following initiatives do you think are top priorities?



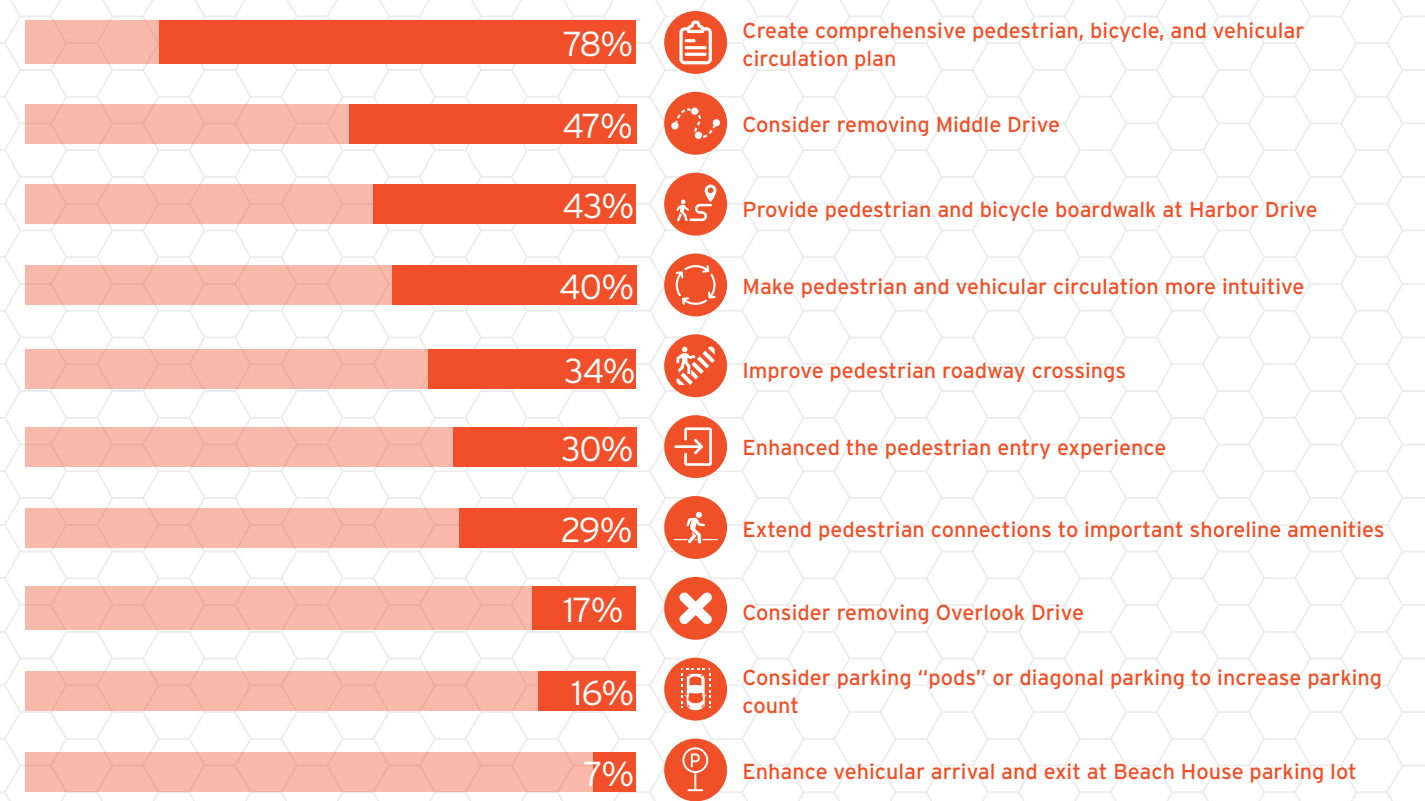
Landscape Conditions: Which of the following landscape initiatives do you think are top priorities?



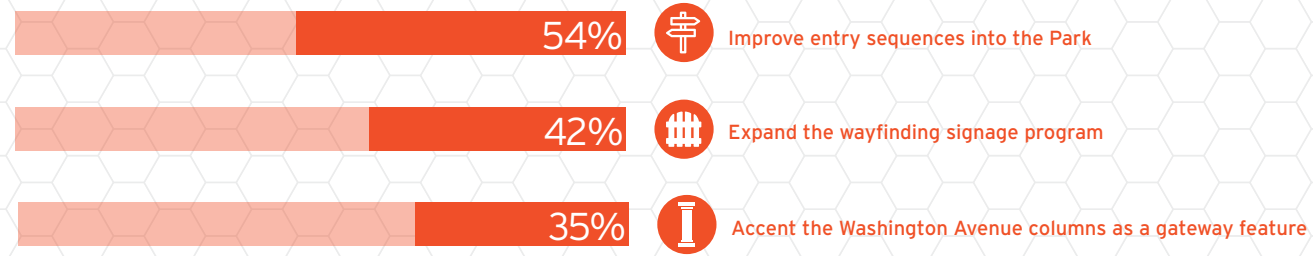
Infrastructure & Utilities: Which of the following infrastructure & utilities initiatives do you think are top priorities?



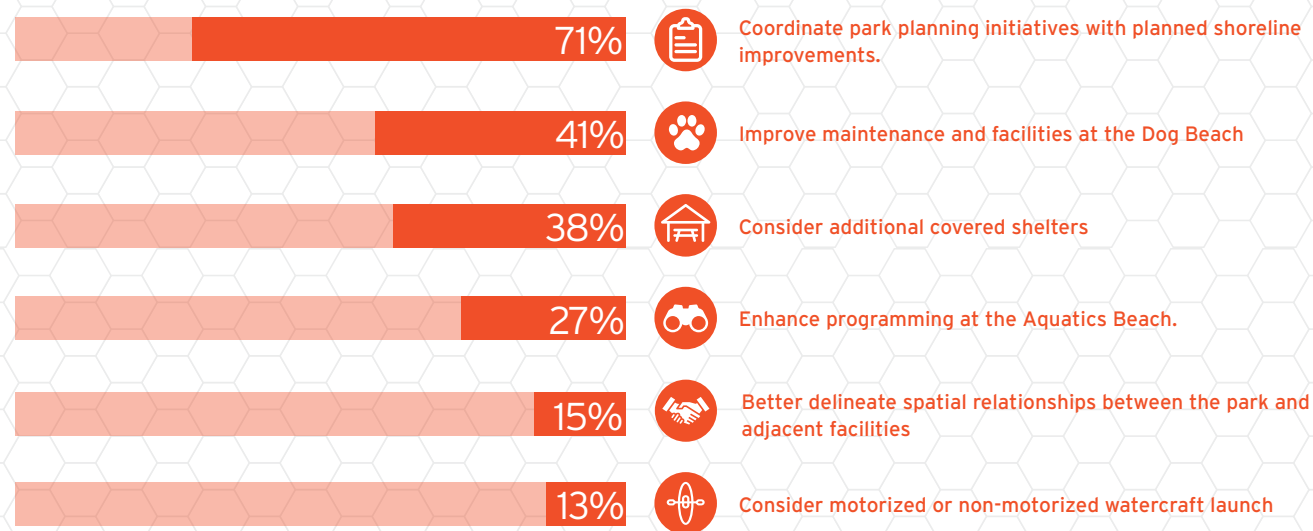
Circulation Conditions: Which of the following circulation initiatives do you think are top priorities?



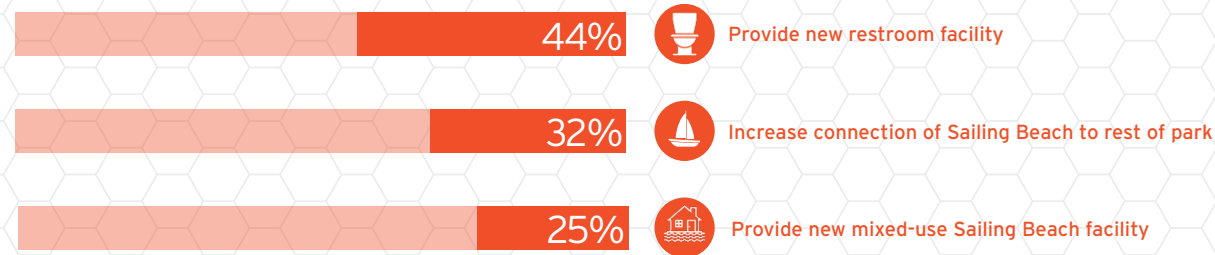
Wayfinding & Signage: Which of the following wayfinding & signage initiatives do you think are top priorities?



Special Conditions: Which of the following special conditions initiatives do you think are top priorities?



Sailing Beach: Which of the following sailing beach initiatives do you think are top priorities?



Maintenance Facilities: Which of the following maintenance facilities initiatives do you think are top priorities?



Word Cloud: What is your vision for Gillson Park?



Less Frequent

More Frequent

Selected Responses: What is your vision for Gillson Park?

“Maintain the beauty and splendor that currently exists while making changes that strike a balance”

“A destination which will allow most individuals to enjoy the magnificence of the lakefront. Don't make it busier.”

“A destination for residents and visitors that is more natural/wild than built up, prioritizing pedestrians and bicyclists over cars.”

“I'd like to see a master plan that was oriented to 2030 and beyond, not only 2021.”

“To maintain this beautiful park. Infrastructure is key. Everything else is superfluous. Please keep it simple.”

“Stronger focus on lakefront related recreation.”

“A beautiful place for residents to gather and have fun with their families and friends.”